

Model GW550

Model GW551



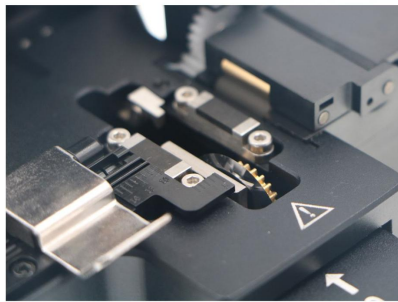
Main Features:

- Universal fiber holder for 250 μ m,900 μ m; ϕ 2.0mm, ϕ 3.0mm patch cord; and drop cable
- Simple and single-step operation
- Automatic cleaving blade rotation
- Blade life up to 60,000 cleaves
- Compact and light weight
- Equipped with fibre scrap collector(GW551 only)
- Automatic fiber scrap collection (GW551 only)

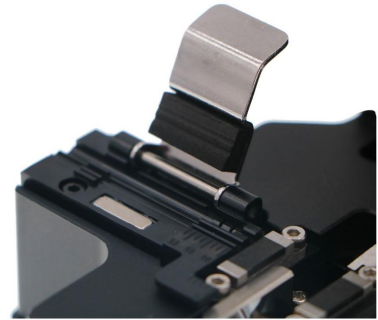
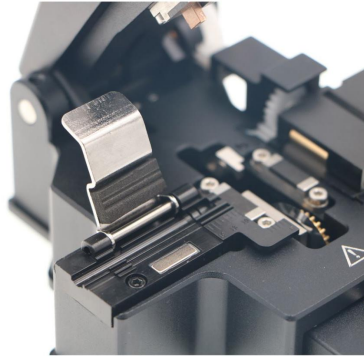
Applications: for both fusion splicing and mechanical termination of fiber.

Specifications:

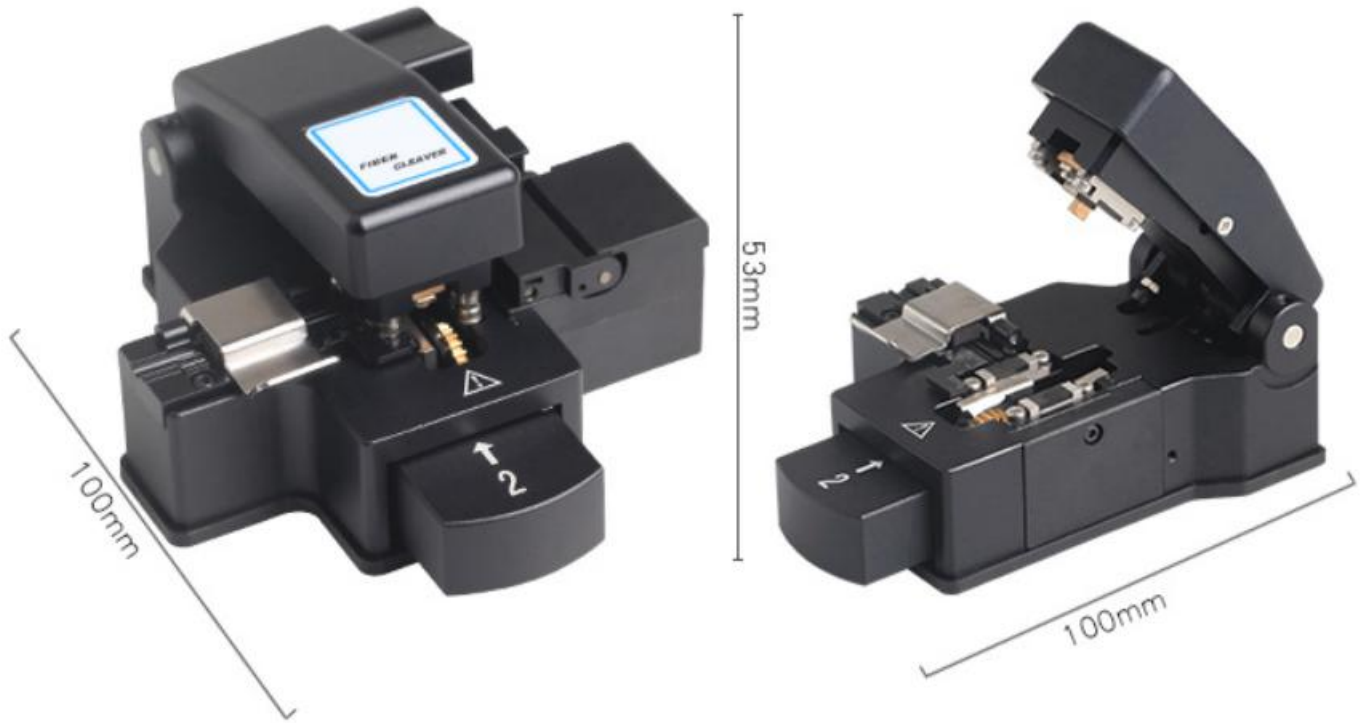
Model	GW550	GW551
Applicable optical fiber	Single core silica optical fiber	
Coating diameter	ϕ 250 μ m, ϕ 900 μ m; ϕ 2.0mm, ϕ 3.0mm patch cord;drop cable	
Cladding diameter	125 μ m	
Cleave length	5~16mm(ϕ 250 μ m); 10~16mm(ϕ 900 μ m)	
Cutting angle	\leq 0.7°	
Blade life	up to 60,000 cleaves	
Dimensions	105mm(W) \times 70mm(D) \times 50mm(H)	107mm (W) \times 94mm (D) \times 50mm (H)
Weight	285g	340g
Fiber scrap collector	no	yes



Fiber Holder



Dimensions:



Package:

Model GW550

Model GW551

